

POST THIS "POTTY POSTER" WHEREVER YOU HAVE A CAPTIVE AUDIENCE!

TURNING OFF YOUR GAS: HOW. WHEN. WHY.

Find your gas shutoff valve, and learn how it works.
Keep an appropriate wrench at the shutoff valve for emergencies.
After an earthquake or accident, shut off your gas IF you:

HEAR IT



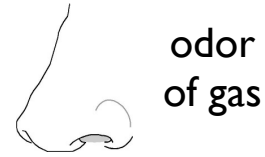
OR

SEE IT



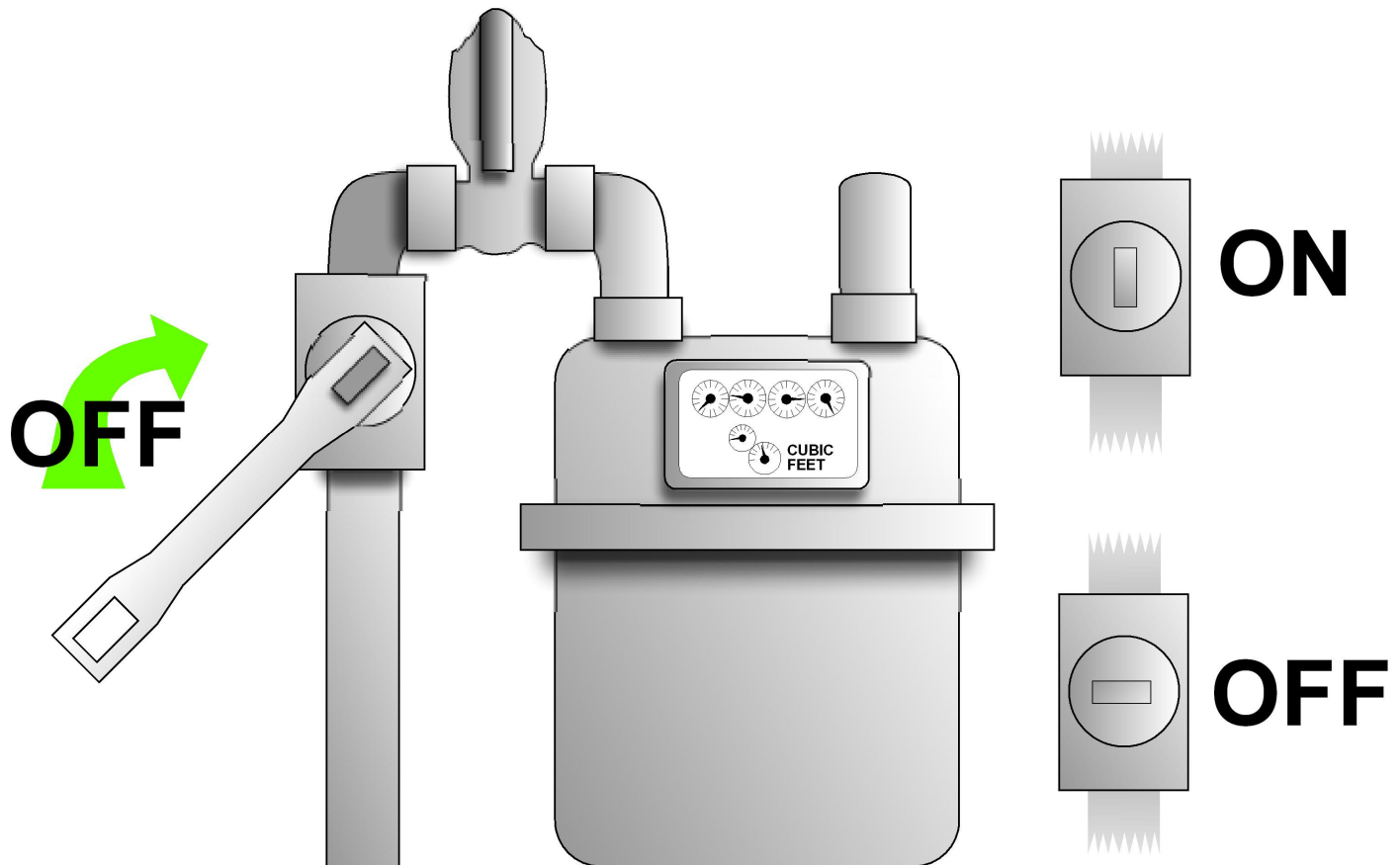
OR

SMELL IT



REMEMBER: DO NOT TURN YOUR GAS BACK ON!

Only your gas company can do so safely.



CARD – Collaborating Agencies Responding to Disasters
(510) 451-3140 || www.CARDCanHelp.org
CARD is a 501(c)3 nonprofit organization